



The Honorable

**State Representative Mike Krusee, House District 52
Chairman, House Committee on Transportation**

Capitol Office
Room CAP GW.18
P.O. Box 2910
Austin, TX 78768

January 8, 2007

***80th State Legislature
Legislative Recommendation***

*“A Portfolio of Educational Opportunities for both the Traditional and
Non-Traditional students of the East Williamson County Region”*

Submitted
By

S. Chuck McCarter, Executive Director
East Williamson County Higher Education Center
516 North Main St., Taylor, TX 76574
Ph: 512/365-2787 Fx: 512/352-5849 Metro 512/354-7242

80th State Legislature

Legislative Recommendation

“A Portfolio of Educational Opportunities for both The Traditional and Non-Traditional students of the East Williamson County Region”

Overview: Globalization, technological innovation and the ongoing restructuring of work have created a “skills premium” for well-educated and trained workers in the U.S. and locally. Currently, Texas has the highest percentage of adults without high school diplomas of any state and is also experiencing major demographic shifts that will exacerbate this problem, if left unattended. Throughout Texas history there has never been a greater need for business and education to collaborate to prepare both current and emerging workers for success in their careers, starting with improved high school.

Legislative Intent: To create, implement and bring to East Williamson County Region a multi-institutional higher education center that will serve the academic as well as career and technology educational needs for both traditional and non-traditional students. Enabling legislation will accommodate necessary fiscal, planning and strategies for an educational setting with goals aimed to educate and expand the workforce population in the East Williamson County Region and future generations.



The Vision: The East Williamson Higher Education Center (EWHEC) will be an extension of the educational successes of Temple College at Taylor and will provide a portfolio of educational and workforce opportunities for the citizens of rural East Williamson County. Part of the goal for the Center is to create quick and flexible responses to employer needs. An additional goal of the Center is to create strategic partnerships with area school districts, the Texas Bioscience Institute, Temple College, a state technical college, and various major universities. The Center’s collaborative technology training model will allow it to leverage the strengths and successes of member partners while providing it the autonomy that is required to build a truly unique regional educational center for the 21st century.

The Center: The site will be a multiple institution campus located in East Williamson County designed to meet the academic and workforce needs of all East Williamson County residents. Memorandums of Agreement have been created and signed that will bring not only academic and technical colleges to the campus but possibly two universities as well. This kind of institution will be the backbone of Texas’ workforce and development and can help the citizens of East Williamson County gain skills and knowledge needed to help with research and development, product design, and lights-out manufacturing. It is through innovative processes that concepts become creations. Whether students will want to work in design, testing or repair, the high skill, high wage programs will help the current and future workforce of East Williamson County.

Economic Impact: Regional Higher Education for East Williamson County: Numerous studies completed through the years note the positive impact of higher education on both state and local economies. General revenue and local property taxes provide the public higher education system with approximately \$6 billion annually. The Texas Comptroller of Public Accounts estimates that for every \$1 spent by the state to educate our youth beyond the high school level, the return to the Texas economy is about \$5.50.

Additionally, the spending and re-spending of salaries, as well as monies made available by students, endowments, grants, research and health care provides about one-third 1/3 of the more than \$33.2 billion the state economy receives each year through higher education. The remainder is generated by greater earnings and productivity by graduates. Economic developers believe that new companies choose an area for expansion or relocation based on the quality of the local workforce. The EWC Higher Education Center will provide the workforce needed for this area's future growth.

This is the future of education and workforce training for East Williamson County. Under the banner of the East Williamson County Higher Education Center and its leadership citizens will be well prepared to meet the future.

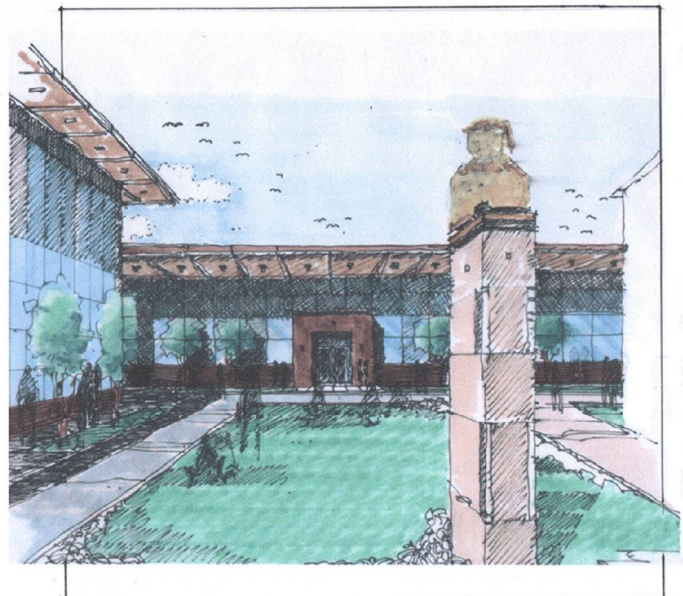
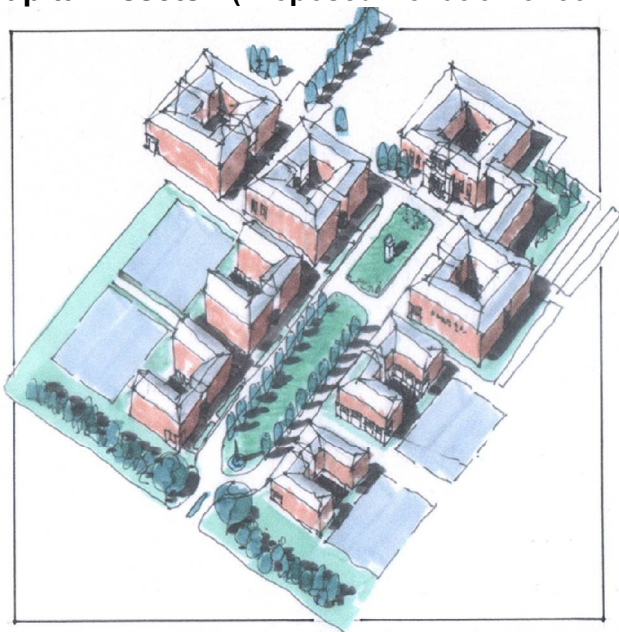
Recommendation: To Establish a Center for Higher Education in East Williamson County that will be a **true multi-partner institution** that will deliver educational opportunities for both traditional and non-traditional students from as early as the 9th grade through the baccalaureate.

Cost Estimate: (\$22,000,000 for Phase I) General Classrooms, a Career and Technology Center and Administrative Offices. Total: 106,000 square feet. The estimate is preliminary and has been derived from the "RS Means Quick Cost Estimate" for a similar construction project, based on a national database adjusted for this region.

Return on Investment for East Williamson County: \$121,000,000

The Texas Comptroller of Public Accounts estimates that for every \$1.00 spent by the state to educate our youth beyond the high school level, return to the Texas economy is about \$5.50. (Temple Daily Telegraph 10/13/06). If we take that statement and apply to this proposal, it would mean an investment of \$22,000,000 can mean a return to the Williamson County economy of \$121,000,000.

Capital Assets: (Proposed Donation of 50 Acres of Land, valued @ \$1,000,000)



An Initiative to Create a Higher Education Center that will meet the Educational and Training Needs for the East Williamson County Region: *A Legislative Recommendation*

Unique Benefits for the EWCHEC - “*A One-Stop Education Center*”

- ✓ The East Williamson County Higher Education Center (EWCHEC) will be a regional higher education center for East Williamson County with the goal of preparing students for college and workforce readiness.
- ✓ The EWCHEC programs will be primarily career and technology oriented, with specific focus on advanced manufacturing and health care.
- ✓ The EWCHEC, with its Early College High School/Middle College designation, will serve students as early as the 9th and 10th grades, with college dual credit opportunities in the math and sciences.
- ✓ The EWCHEC mission, through our consortium of East Williamson County ISD partners, will provide college and workforce readiness with a focus on benefiting rural schools and the TEA "4 x 4" (4 science and math in 4 years) mandate.
- ✓ The demographics of East Williamson County support a higher education center in East Williamson County that will provide college and workforce readiness opportunities through multi-institutional partnerships on a single campus. (***Hutto, the fastest growing city in Texas, will grow by an additional 30,000 by 2010.***)
- ✓ The EWCHEC will address an ever-growing need to serve workforce training in Williamson County through multi-program partnerships with TSTC Waco. (Example: Bechtel)
- ✓ The EWCHEC will provide a university component and several universities have expressed an interest.

East Williamson County Partnership

- Hutto Independent School District (ISD)
- Taylor ISD
- Hutto Economic Development Corporation (EDC)
- Taylor EDC
- Region 13 Education Service Center
- Temple College
- Central Texas Tech Prep Consortium
- City of Taylor
- Concordia University
- City of Hutto
- Tarleton-Central Texas University
- Rural Capital Area Workforce Development Board
- Skill point Alliance
- Texas State Technical College (TSTC)
- Additional Area ISDs: Bartlett, Coupland, Granger, Jarrell, Lexington, McDade, Rockdale, Thorndale, Thrall
- Home Schools

EWCHEC - “Aimed to Close the Gaps in Student Participation & Student Success”
Closing the Gaps Initiative: Strategic Goal 2006-2015 - Texas Higher Education Coordinating Board

The Closing the Gaps Initiative is intended to dramatically increase the number of individuals from traditionally underserved populations who participate (i.e., enroll and are retained) and who succeed in higher education. Creating a partnership with TSTC in East Williamson County, an area with a highly diverse population, provides greater access to and more opportunities for success in higher education to underrepresented residents of East Williamson County and honors Temple College at Taylor’s commitment to the statewide Closing the Gaps initiative.

Higher Education and the Texas Economy: Data about Higher Education in Texas

(from Temple Daily Telegram, page 4A, Monday November 13, 2006)

- Soon after the Republic of Texas was formed, public education for children began to be developed and by 1840, the first institution had been established.
- Preliminary data for Texas shows that the number of students taking college courses this semester (Fall 2006) exceeds last fall’s (2005) by more than 27,200.
- The 1.21 million students currently in college and universities, both public and private, is about 2.3 percent more than in the fall 2005.
- 80% of the aggregate enrollment growth this fall is in two-year schools. Public community colleges/state/technical colleges and independent junior colleges added 19,793. These institutions now provide more than 48% of the higher education opportunities throughout Texas.
- Among public colleges, enrollment ranges from 49,728 (University of Texas) to 968 (Sul Ross State University Rio Grande College), Student body size in independent institutions varies from 14,040 (Baylor University) to 44 (College of St. Thomas More).
- The enrollment in various medical, dental, and health-related entities available across the state is now at 16,228 in public institutions and 2,769 in private schools.
- Numerous studies completed through the years note the positive impact of higher education on both state and local economies. General revenue and local property taxes provide the public higher education system with approximately \$6 billion annually. The Texas Comptroller of Public Accounts estimates that for every \$1 spent by the state to educate our youth beyond the high school level, the return to the Texas economy is about \$5.50.
- Additionally, the spending and re-spending of salaries, as well as monies made available by students, endowments, grants, research and health care provides about one-third of the more than \$33.2 billion the state economy receives each year through higher education. The remainder is generated by greater earnings and productivity by graduates.
- Higher education is also providing advantages to individuals as the National Association of College and Employers recently reported that businesses are expecting to hire 17.4 percent more college graduates in 2007 than in 2006. Entry level salaries are also expected to increase in all fields especially the “money-making” fields: chemical engineering, electrical engineering, computer engineering, and mechanical engineering and computer sciences.
- Even though higher education enrollment continues to increase, this years hike (twice the gain from 2004 – 2005) is less than the growth rate the state experienced during the same period.

How Does Texas Compare to the Nation?

The *Nation’s Report Card* is the most reliable measure.

- Texas is very strong in the early elementary grades.
- The States’ average is better than the national average in middle school.
- Math achievement is stronger than reading and has been improving more rapidly.
- College entrance test scores are the only available measure for high school.
- Texas is behind the nation in high school

Temple College at Taylor in Service to East Williamson County for 10 years

To serve the increasing educational and training needs of eastern Williamson County and the surrounding area, Temple College opened Temple College at Taylor in the fall of 1997. The Taylor Center provides a variety of academic and technical courses, as well as workforce training. Students attending classes at the Taylor Center are as diverse as the courses offered, from traditional students, concurrent students, employed individuals to senior citizens exploring their interests. Temple College offers library services to the Taylor Center through an agreement with the Taylor Public Library.

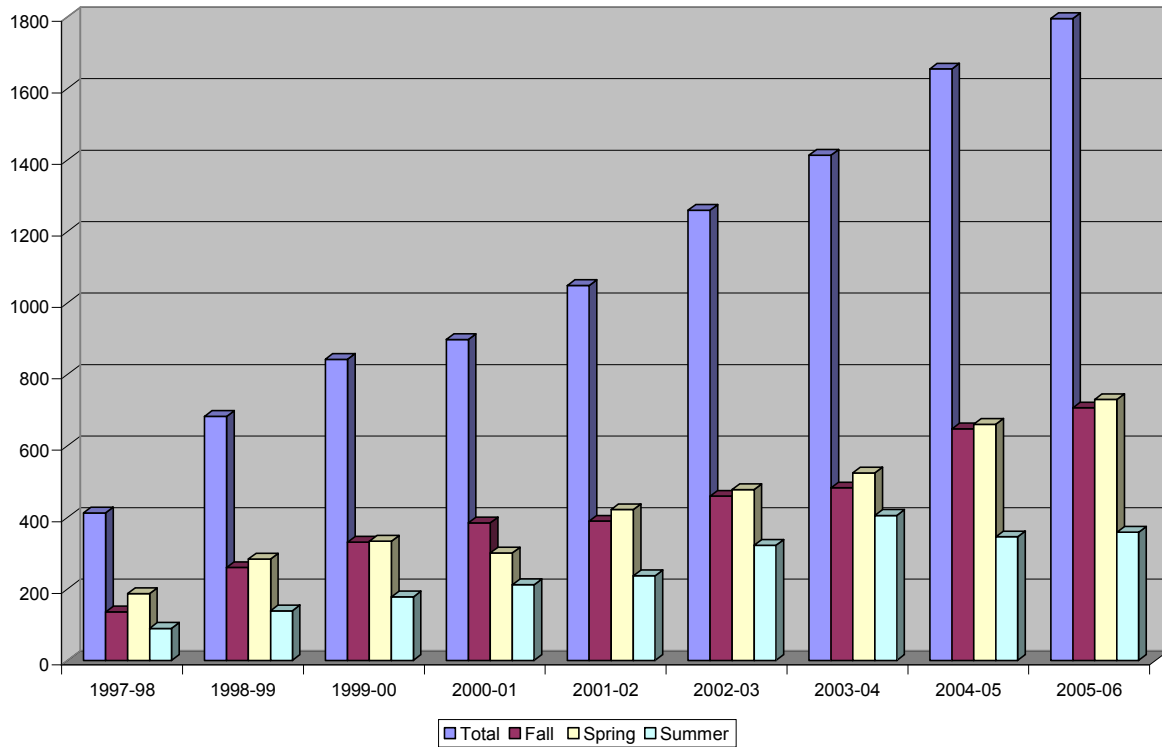
Temple College at Taylor's Growth over 10 years: An increase of 335 %!!!

Year	Total	Fall	Spring	Summer
1997-98	413	136	187	90
1998-99	683	260	284	139
1999-00	843	331	334	178
2000-01	898	385	301	212
2001-02	1049	390	422	237
2002-03	1260	460	478	322
2003-04	1414	483	525	406
2004-05	1655	648	661	346
2005-06	1796	707	730	359

Temple College at Taylor has continued to expand its facilities and program offerings to the extent that over 900 students now attend this campus. Temple College at Taylor has a projected growth of upwards to 2500 students by the year 2010. (Projected growth of Williamson County is to be 1.75 million by 2025).

Graph illustrates Temple College at Taylor Total Academic Year enrollment 1997-98 (400 students) 2005-2006 (1800 students) increase of 335%!!

TCAT Growth



Temple College at Taylor - Educational Goals & Standards

Value Statements - Temple College at Taylor continuously assesses its programs and services and utilizes the results for ongoing excellence in education, leadership, and innovation.

Learning Environment — Temple College at Taylor pledges to provide a stimulating, compassionate, supportive educational environment that encompasses the entire community. The College offers a variety of opportunities to all Central Texas citizens through academic transfer, technical programs, continuing education, and adult education. To achieve the desired educational goals, Temple College at Taylor provides a safe, comfortable learning environment.

Quality Access — Temple College at Taylor provides access to educational opportunities to create a diverse student population regardless of race, color, gender, religion, or disability. The College informs the citizens in its service area of the educational opportunities available to them at the Temple College at Taylor campus, and through distance-learning methods. Operating with an Open Door admission policy, Temple College at Taylor takes the responsibility of providing courses for the under served and for those who lack the academic skills to succeed at the college level.

Student Development — Temple College at Taylor provides services to help students succeed in choosing and achieving their career and educational goals. Temple College at Taylor also designs activities to help students develop leadership potential and pursue special interests.

Economic and Workforce Development — Temple College at Taylor strives to improve the prosperity of our region through partnerships with business and industry, government, and community organizations.

Temple College at Taylor strives to supply East Williamson County with a skilled, educated workforce by providing programs for individuals who wish to enrich their lives or to enhance existing knowledge and skills to meet new job demands. Temple College at Taylor is a critical link for promoting life-long learning.

Community Partnerships — Through a consortium of school districts Temple College at Taylor serves as a catalyst for cultural, artistic, intellectual and physical activities to enrich the lives of East Williamson County through its humanities and fine arts programs. School district partners include: Hutto, Taylor, Bartlett, Copland, Granger, Jarrell, Lexington, McRae, Rockdale, Thorndale and Thrall

Technology — Temple College at Taylor endeavors to offer the latest technology to help students and instructors attain their educational goals by providing modern learning resources, tools, and technology.

Stewardship — Temple College at Taylor believes the most important resource of the College is its people who are an integral component of a supportive collegial work environment, which rewards excellence. Temple College at Taylor is aware that the community has entrusted it with resources and strives to return that trust by assuring maximum benefit for the community. Temple College at Taylor is committed to excellence in helping students reach their full potential by developing their academic competencies, critical thinking skills, communication proficiency, civic responsibility, and global awareness. As a leader in education, Temple College at Taylor is proud of its mission of challenging the human mind to explore new ideas and seek new opportunities.

“A Portfolio of Educational Opportunities for both the Traditional and Non-Traditional students of East Williamson County Region”

###